

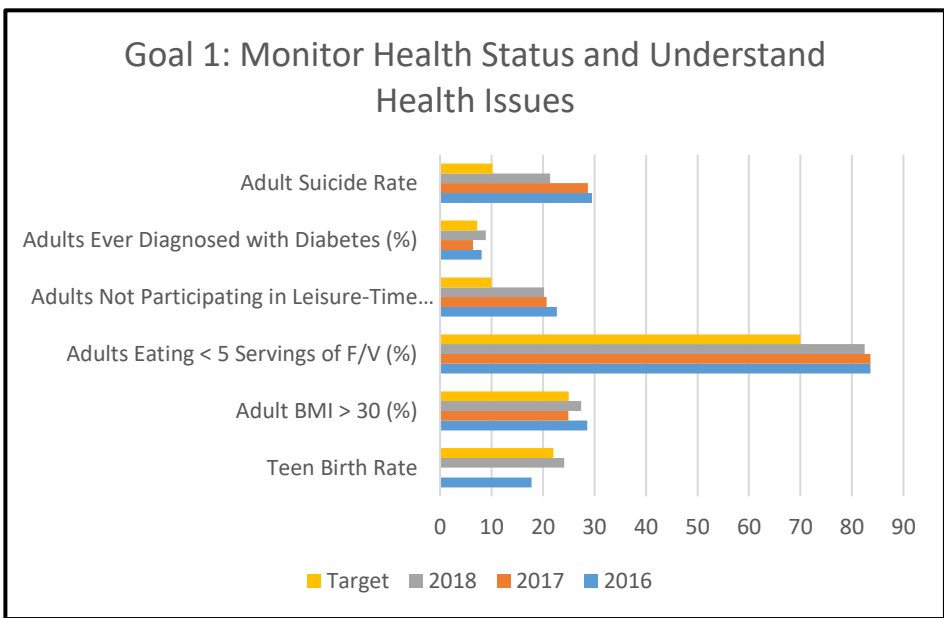
PROGRAMATIC

Goal 1: Monitor Health Status and Understand Health Issues				
Performance Measures	2016	2017	2018	Target
Teen Birth Rate	17.8		24.1	22
Adult BMI > 30 (%)	28.6	24.9	27.4	25
Adults Eating < 5 Servings of F/V (%)	83.6	83.6	82.5	70
Adults Not Participating in Leisure-Time Activities (%)	22.7	20.7	20.2	10
Adults Ever Diagnosed with Diabetes (%)	8.1	6.4	8.9	7.2
Adult Suicide Rate	29.5	28.7	21.4	10.2

Objective 1: Obtain data that provides information on the community's health to identify trends and population health risk.

Strategies for Improvement :

1. Monitor existing data sources.
2. Analyze data and trends.
3. Promote information through agencies to policy and decision makers and the general public.

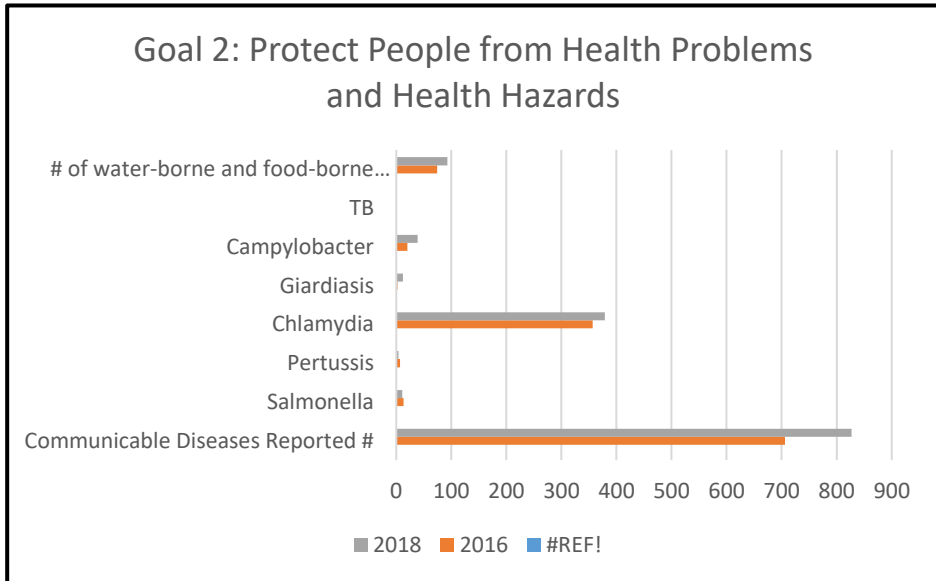


Goal 2: Protect People from Health Problems and Health Hazards				
Performance Measures	2016	2017	2018	Target
Communicable Diseases Reported #	706	659	827	N/A
Salmonella	13	7	11	N/A
Pertussis	7	5	4	N/A
Chlamydia	357	313	379	N/A
Giardiasis	2	16	12	N/A
Campylobacter	20	8	39	N/A
TB	0	1	1	N/A
# of water-borne and food-borne illnesses investigated	74	93	93	N/A

Objective 2: Minimize, contain, and prevent adverse communicable disease outbreaks and health hazards.

Strategies for Improvement :

1. Conduct investigations of reportable diseases.
2. Respond to and mitigate communicable disease outbreaks.



ANNUAL PUBLIC HEALTH - IDAHO NORTH CENTRAL DISTRICT PERFORMANCE DASHBOARD FY 2018



Goal 6: Enforce Public Health Laws & Regulations				
Performance Measures	2016	2017	2018	Target
# of Septic Permits Issued	254	238	261	200
# of Food Establishment Inspections	1,036	967	1,007	100%
# of PWS Monitored	51	54	54	100%
# of Child Care Facility Inspections	63	72	63	100%
# of Solid Waste Facility Inspections	21	17	17	100%
# of Public Pool Inspections	15	21	20	100%

Objective 6: Monitor compliance; educate individuals and operators; and enforce current public health laws, rules, and regulations for all activities and establishments regulated by Health Districts.

Strategies for Improvement :

1. Conduct inspections per relevant Idaho statutes, rules, and regulations.
2. Utilize inspection processes to educate individuals, managers, and operators on the intent and benefit of public health laws, rules, and regulations.
3. Provide education, options, and guidance to the public and licensed operators on how to comply with the current public health laws, rules, and regulations.

